

South East Dorset Transport Strategy

Have your Say

Summer 2010



Welcome!

Thank you for picking up this leaflet. This is your chance to help shape the future of the transport network in South East Dorset.



Last year we asked for your views on the local transport system. Hundreds of questionnaires were filled in and from these we were able to build up a picture of the current problems.

We have now moved on to the next stage of the study. This has involved developing a wide range of options to deal with the problems raised during last year's consultations. These options will be tested using the study's computer model of South East Dorset's transport network.

Before we begin testing the options, we would like to hear your opinions.

Please take a few moments to read the information in this leaflet and complete the questionnaire. The questionnaire can be returned to the freepost address supplied. No stamp or envelope is needed!

Please return the questionnaire by **Friday 30th July 2010** to be entered into the prize draw for a chance to win a day out on the Swanage Railway.

Alternatively the questionnaire may be completed online at www.sedorsetmms.com.



South East Dorset Transport Study

Transport affects everyone in their daily lives whether it's travelling to work, school, college, the shops, the beach, the cinema or visiting friends.

Many of the things we do involve making a journey, whether on foot, by bicycle or in a bus, train, taxi or car. The goods that we buy in shops will probably have been delivered by lorry or van.

Usually we want to be somewhere by a certain time and congestion means that we have to allow more time for our journeys. We can't rely on reaching where we want to be on time, so we have to allow longer for the journey or risk being late.

A good quality transport system is essential to support the local economy and the quality of life for the people of South East Dorset. It must be developed sensitively to protect and enhance the special quality of our natural environment.

In 2008, transport consultant Atkins was chosen to carry out a study of the transport system in South East Dorset. The study runs for two years and is due to be complete by the end of 2010. Atkins was appointed by a partnership group led by the Borough of Poole. The partnership includes:

- Borough of Poole;
- Bournemouth Borough Council;
- Dorset County Council;
- Highways Agency;
- Department for Transport;
- Government Office for the South West;
- South West Councils; and
- South West Regional Development Agency.

“Over 600 people filled in questionnaires and meetings were held with representatives from a variety of organisations in the area”

The study concentrates on the conurbation of Poole – Bournemouth – Christchurch, extending to Wareham, Wimborne, Verwood and Ringwood.

The study will identify the improvements that are needed over the next 20 years or so. Major transport schemes take a long time to plan and deliver, so we need to start developing them soon.

In the first part of the study (during 2008) we collected data on how people currently travel around South East Dorset. This involved interview surveys of people as they travelled around the area. From this data we were able to build a computer model of the transport network. The computer model will be used to test a range of alternative transport schemes.

In the second part of the study (during 2009) we asked you to give us your views on the problems and issues with South East Dorset's transport network. Over 600 people filled in questionnaires. Meetings were held with representatives from a variety of organisations in the area. By combining people's opinions with the transport data collected in 2008, we were able to build up a detailed picture of the problems.

Problems & Issues – What You Told Us

Last year we asked for your views on the local transport system.

Here are some of the things that you told us:



“Cycling and walking routes need to be improved to encourage people to switch from using their car.”

“Many people said that public transport fares are quite high. People also want to see more direct, more frequent and more reliable bus services right across South East Dorset.”



“The majority of people would prefer a ‘balanced approach’ to improving the transport system, as this would help reduce reliance on the private car particularly in built-up areas.”

“It is difficult to reach Bournemouth Airport using public transport.”

“Many people said that the A31 must be improved to reduce congestion and that new road links are needed for Poole.”

“Most people thought that growth in travel demand should be met by improved public transport, with some improvements to the road network.”

“You want to be able to use the same ticket on different bus and rail services, rather than having a separate ticket for each service operator.”



“Improvements are needed to bus services to/from towns and villages in the surrounding countryside. At the moment there are few alternatives to using a car.”



South East Dorset: Transport Themes

We have developed four themes based on the problems and issues that you told us about last year. These themes cover a full range of measures. The strategy that we select for South East Dorset will depend on the findings from this questionnaire and the results of assessments using the study's computer model of the transport network. The chosen strategy would be delivered between 2011 and 2026.

Important Note

These themes have been designed to generate discussion and feedback from the consultation process. The themes show the different ways in which measures could be combined to create completely different transport strategies to 2026. The final preferred strategy may not necessarily be one of these themes, but could be a combination of measures from across the themes. The final strategy would depend on consultation feedback and on how well schemes perform when using the computer model.

Theme A: Do-minimum

This theme would mean that we continue with our current policies and the type of transport measures that have been delivered over the last few years. This would need limited funding compared with the other themes. We would continue to deliver the following measures:

Greener Choices

- Promoting 'greener' travel options in workplaces and schools
- Some new cycle lanes and improvements for pedestrians

Public Transport

- Small-scale measures to improve bus reliability, such as new bus lanes
- Continue with community transport schemes
- Better information for passengers

Roads

- Twin Sails Bridge (new Poole Harbour bridge)
- Improve traffic signal timings to help traffic flow
- Local road safety schemes



How well might this perform?

Supporting the economy	⬇️
Reducing Carbon emissions	↔️
Improving safety, security and health	↔️
Helping to achieve a fairer society	↔️
Improving everyone's quality of life	↔️
How easy would this be to deliver?	⬆️
How affordable is this?	⬆️

Theme B: Public transport improvements and 'greener' choices

This theme includes everything from Theme A plus more investment in public transport and 'greener' choices schemes.

Greener Choices

Same as Theme A, plus:

- Better walking and cycling access to rail stations
- Car clubs and car sharing schemes

Public Transport

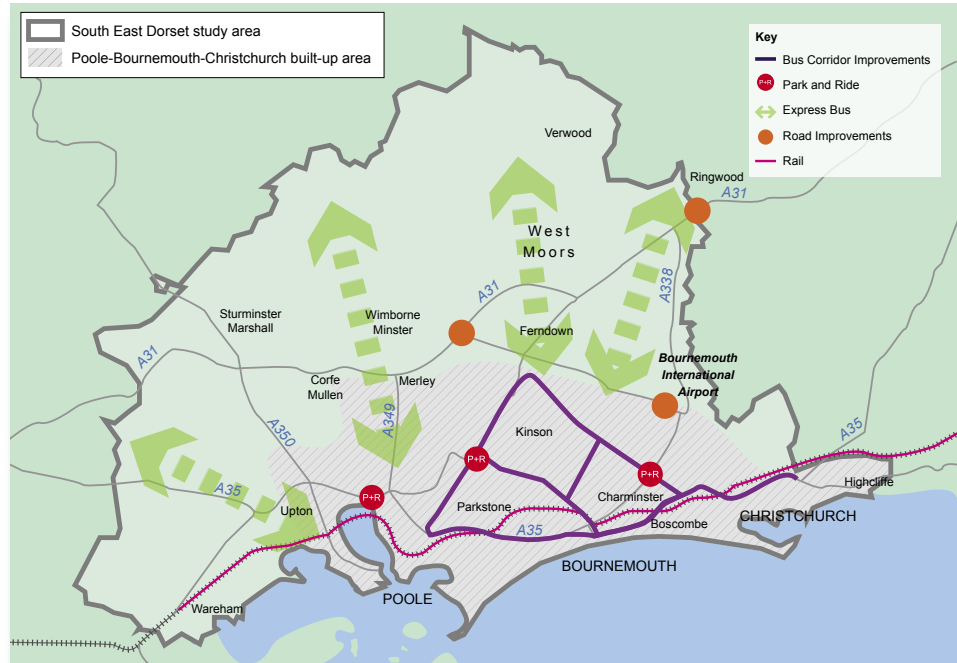
Same as Theme A, plus:

- Measures to improve bus reliability, reduce journey times and improve bus stops along entire corridors – see map (Poole to Christchurch, Wallisdown Road, Bear Cross to Christchurch, Bear Cross to Poole along Ringwood Road, Charminster Road)
- Park & Ride sites at Creekmoor, Mannings Heath and Riverside Avenue (near Bournemouth Hospital)
- Network of faster express bus services to rural areas
- Smartcard ticketing (similar to London Oyster card)
- More community transport schemes
- More frequent rail services across the area (between Wareham and Brockenhurst)

Roads

Same as Theme A, plus:

- A31 widening at Ringwood and improvements at Canford Bottom
- Local junction improvements and new traffic control centre
- Parley Lane / Christchurch Road (B3073) improvements and widening near the airport
- Increased car parking charges in town centres and fewer long-stay parking spaces. Long-stay parking would be provided by the Park & Ride sites instead



How well might this perform?

Supporting the economy	↔
Reducing Carbon emissions	↑
Improving safety, security and health	↑
Helping to achieve a fairer society	↑
Improving everyone's quality of life	↔
How easy would this be to deliver?	↑
How affordable is this?	↔

Theme C: More ambitious public transport and 'greener' choices, while discouraging car-based commuting

This theme includes everything from Themes A and B plus major investment in public transport and 'greener' choices schemes. A charge on workplace parking spaces and increased long-stay parking charges would be needed to fund these schemes.

Greener Choices

Same as Themes A and B, plus:

- Promote greener and healthier travel choices such as walking and cycling
- Encourage more environmentally friendly driving styles (eco-driving)
- Infrastructure for alternative fuel vehicles (such as electric car charging points)

Public Transport

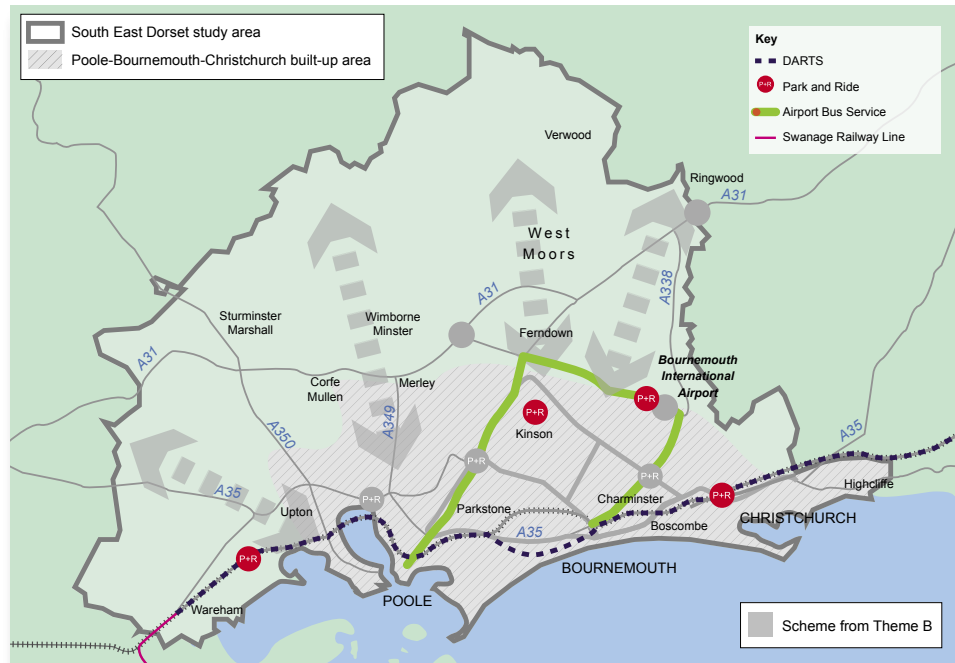
Same as Themes A and B, plus:

- Dorset Area Rapid Transit System. Light rail from Wareham to New Milton using the existing rail line and on-street through Bournemouth. Vehicles would operate at least every 12 minutes
- More Park & Ride sites – at Christchurch (rail), New Road (Kinson), Holton Heath (rail) and Bournemouth Airport
- Improved express bus connections to/from the airport
- Providing through trains to Swanage

Roads

Same as Themes A and B, plus:

- A charge on workplace parking spaces
- Reduced long-stay parking with increased charges in town centres
- Controlled parking zones to reduce on-street parking by non-residents



How well might this perform?

Supporting the economy	↑
Reducing Carbon emissions	↑
Improving safety, security and health	↑
Helping to achieve a fairer society	↔
Improving everyone's quality of life	↑
How easy would this be to deliver?	↓
How affordable is this?	↓

Theme D: Highway and public transport improvements, while controlling demand for travel by car

This theme includes everything from Themes A and B along with an emphasis on increasing road capacity. A congestion charge would be needed to control traffic levels and to fund these schemes.

Congestion charging has been included in this theme to ensure that the process has considered all options. However it does not currently form part of the local authorities' policies.

Greener Choices

Same as Themes A and B

Public Transport

Same as Themes A and B

Roads

Same as Themes A and B, plus:

- Turning the A31 into a dual-carriageway between Ameytsford and Merley
- New link road between Canford Bottom and Mannings Heath (A31 to Poole)
- Relief road in the Castle Lane West area and improvements from Riverside to Iford
- Improvements to the Blackwater junction near the airport
- New East-West road link between Parley and Mannings Heath
- Widening the A338 Bournemouth Spur between the Blackwater and Cooper Dean junctions
- Improvements to St Paul's Roundabout, Cambridge Road junction, Fountain Roundabout and Stony Lane

and...

- A congestion charge (per km) across the built-up area of Poole, Bournemouth and Christchurch
- A charge on workplace parking spaces and doubled long-stay parking charges in town centres



How well might this perform?

Supporting the economy	↑
Reducing Carbon emissions	↓
Improving safety, security and health	↔
Helping to achieve a fairer society	↔
Improving everyone's quality of life	↔
How easy would this be to deliver?	↓
How affordable is this?	↓

Contact Us

Thank you for taking the time to express your views on the options for South East Dorset's transport system.

If you would like further information then you can contact us by:



sedorset.transport@poole.gov.uk



01202 262044



South East Dorset Transport Study,
Transportation Services, Borough of Poole,
St John's House, Serpentine Rd,
Poole, BH15 2DX



www.sedorsetmms.com

If you would like this leaflet in a different format, for example Braille, audiotape, large print or another language then please contact Rick Clayton. Telephone: 01202 262044.
E-mail: sedorset.transport@poole.gov.uk

Transport partnership by:



ATKINS



What will be happening next?

Before we begin testing the options, we would like to hear your opinions on the types of schemes that you would or would not like to see delivered. You can have your say by filling in the questionnaire included with this leaflet and posting it to the freepost address provided.

We will use your feedback to help narrow down the options, so that by September 2010 we will have a 'preferred strategy'. We will then give everyone the opportunity to comment on the proposals before a final decision is made on whether the strategy should be adopted by the local authorities.

The local authorities will then include the strategy in the Local Transport Plan.

